**DIMENSIONS**

<b>A</b>	Overall height	m	3.08
<b>B</b>	Overall length	m	6.92
<b>C</b>	Overall width	m	2.45
<b>D</b>	Ground clearance	m	0.35
	Max lift height	m	20.5
	Max reach	m	17.8
	Max lift capacity	kg	5500
	Capacity at max height	kg	2500
	Capacity at max reach	kg	850
	Overall weight	kg	17960
	Front axle unladen weight (boom retracted and lowered)	kg	8260
	Rear axle unladen weight (boom retracted and lowered)	kg	9700
	Turning radius (over tyres)	m	4.29

**ENGINE**

Type		JCB ECOMax T4F
Displacement	litres	4.8
Gross power	kW (hp)	108 (145) @ 2200rpm
Max torque	Nm	560 @ 1500rpm
Cylinders		4 in line
Fuel		Diesel direct injection turbocharged
Fuel tank	litres	190
AdBlue tank	litres	26
Gradeability		40%
Batteries	volts	2 x 12
Cooling system		Water – intercooler

**TRANSMISSION AND HYDRAULICS**

Transmission model		Bosch Rexroth
Transmission type		Two-speed hydrostatic
Drive wheels		4-wheel drive
Steering mode		4-wheel steer – 3 steering modes

**PERFORMANCE**

Rotation	Continuous 360° rotation of turret mounted on external slew ring with in cab manual slew lock.
Max travel speed	40kph

**AXLES**

Type	Dana Spicer – with epicyclic reduction gear.
Model	213
Oscillation	±8° oscillation with automatic hydraulic lock out on rear axle.

**BRAKES**

Type	Power brakes hydraulically activated, oil-immersed multi-disc type on each axle.
Rear axle	SAHR park brake.

**HYDRAULICS**

Type	Variable displacement pump electronically controlled with variable displacement motor.
Movement control	2 servo electric joysticks.
Fluid	160 litre hydraulic tank.

**OUTRIGGERS**

Type	4x telescopic outriggers with one touch auto deploy/level/retract.
------	--

**LOAD MANAGEMENT SYSTEM**

Full crane style load management system
7" screen with rotary controller
Envelope limits
5 configurable speed profiles

**CARRIAGE**

Type	Q-Fit carriage
Attachment recognition	RFID

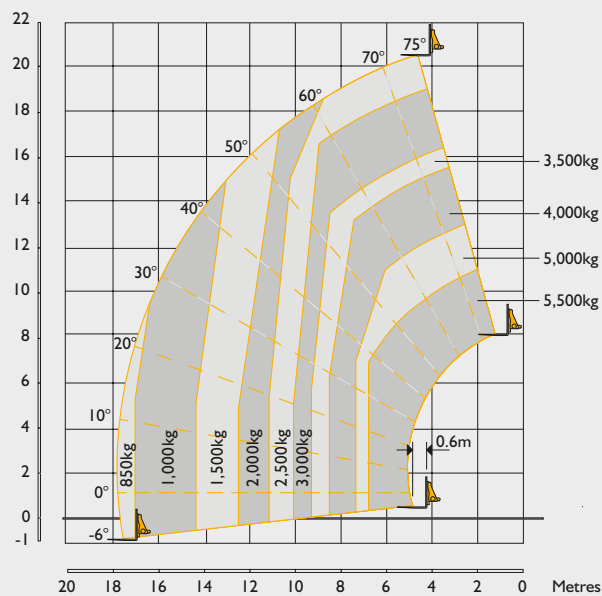
**TYRES**

Type	445 / 65 R22.5
------	----------------

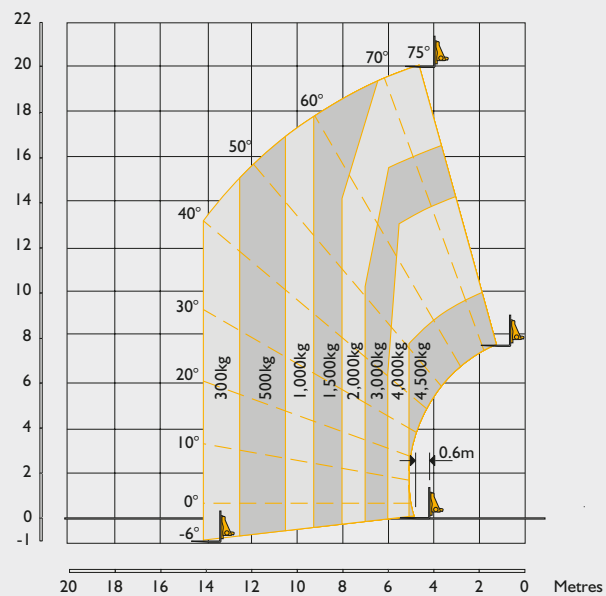
**STANDARD CONFORMITY**

EN1459-2
EN15830
EN14401
EN280
ROPS/FOPS
EU Stage IV
EPA Tier 4 Final
ISO10896-2

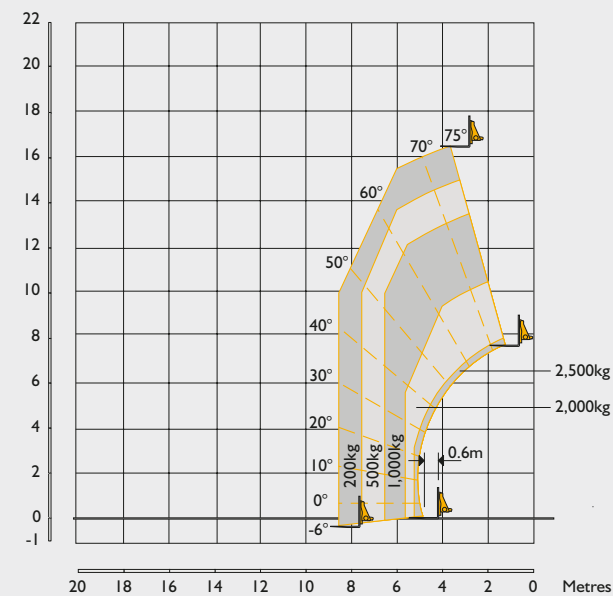
LIFT PERFORMANCE – FORKS, 360° WITH OUTRIGGERS DEPLOYED



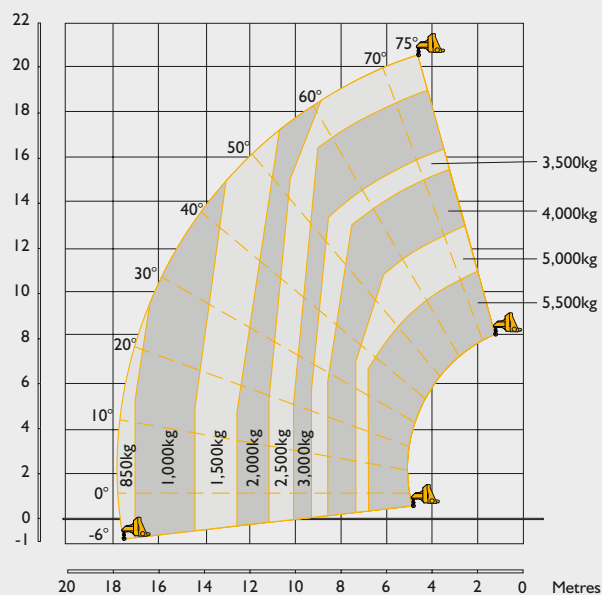
LIFT PERFORMANCE – FORKS, STRAIGHT AHEAD ON TYRES



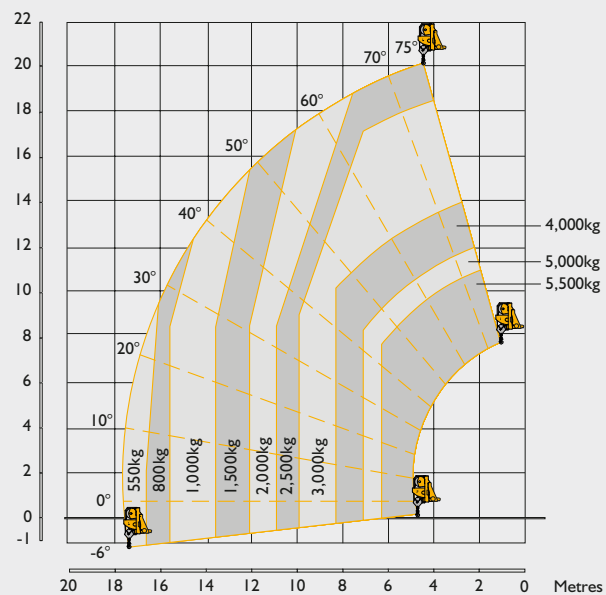
LIFT PERFORMANCE – FORKS, 360° ON TYRES



LIFT PERFORMANCE – 680MM JIB, 360° WITH OUTRIGGERS DEPLOYED



LIFT PERFORMANCE – 5.5T WINCH, 360° WITH OUTRIGGERS DEPLOYED



LIFT PERFORMANCE – 2-METRE JIB WINCH, 360° WITH OUTRIGGERS DEPLOYED

